



DYVA
艾姆森控制阀门
ATAMMS CONTROL VALVE

国阀品质
NATIONAL VALVE QUALITY

BUTTERFLY VALVE SERIES 蝶阀系列

为各领域提供全套阀门解决方案！

聚焦客户关注的挑战和压力,提供有竞争力的工程产品和高质量的工程服务,持续为客户创造最大价值。

用途

本蝶阀系吸收、消化国外技术，采用三维偏心多层次金属密封结构，适用介质温度 $\leq 550^{\circ}\text{C}$ 冶金、电力、石油化工以及给排水等管道上作调节流量和截断流体的最佳装置。

Uses

The valve system to absorb, digest foreign technology, using three-dimensional eccentric multi-level metal seal structure, applicable to medium temperature = 550°C metallurgy, electric power, petrochemical, as well as to the drainage pipe for regulating fluid flow and cut off the best device.

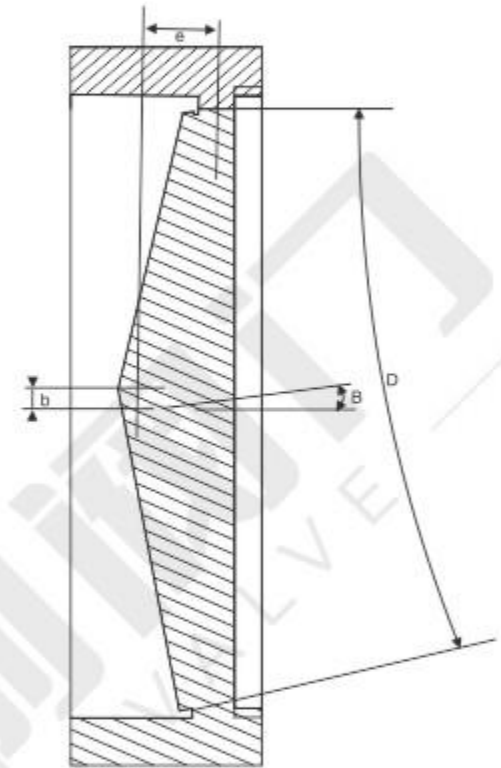
特点

- 1、蝶板密封圈为软硬层叠式金属片，具有金属硬密封和弹性密封的双重优点，无论在低温和高温情况下，均具有优良的密封性能。
- 2、采用三维偏心结构，阀座与蝶板几乎无摩擦，具有越关越紧的密封功能。
- 3、阀体密封面，采用堆焊不锈钢、钴基硬质合金，密封面耐磨损，使用寿命长。
- 4、结构独特，操作灵活、省力、方便、不受介质压力的高、低影响，密封性能可靠，使用寿命长。通常的双偏心蝶阀像b（偏离管道中心）和a（偏离密封面中心线）所示的那样，目的是减少阀座与密封件之间大约 15° 行程的摩擦。

HPV增加了一个独特的偏心角 β ，倾斜的锥形不仅克服了阀门启闭中密封件和阀座之间所有接触摩擦，从而增加使用寿命，而且通过外加力矩的改变可以任意调整其密封比压，使密封更为可靠，绝不出现过关现象。

Feature

- 1、butterfly plate seal for the hard and soft layering pieces of metal with a metal seal and flexible seal the dual advantage of both low and high temperature cases, both with excellent sealing performance.
- 2、using three-dimensional eccentric structure, valve seat and butterfly plate almost no friction, with the more closed more tight sealing function.
- 3、valve sealing surface, using welding stainless steel, cobalt-based alloy, sealing surface wear resistance and long service life.
- 4、The structure is unique, the operation nimble, reduces effort, conveniently, the medium pressure high, the low influence, the sealing property not to be unreliable, the service life is long. The usual double eccentric butterfly valve, as b (deviate from the pipe center) and a (deviate from the sealing surface of the centerline) as shown in the aim of reducing valve seat and seal between the friction of approximately 15° travel. HPV adds a unique eccentric angle β , slope of the cone not only overcome the valve open and close the seal and the seat all contacts between the friction, thereby increasing the service life, but also through changes in torque can be applied arbitrarily to adjust their seal over pressure, so that more reliable seal and never pass phenomenon occurs.



采用标准 Standard

制造标准 Manufacturing Standard	JB/T 8527-97	法兰标准Flange Standard	GB 9113
结构长度标准 Structure the length of the standard GB	GB 12221-89	检验标准Test Standard	GB/T 13927-92

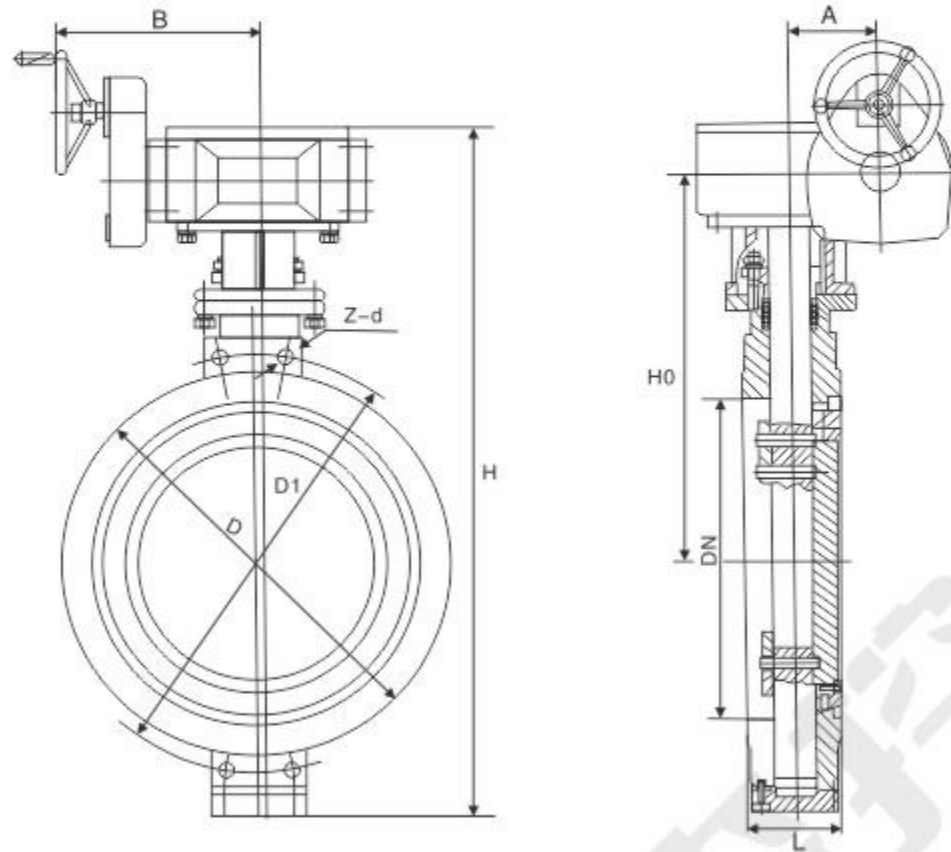
主要性能规范 Main Performance Specifications

公称通径 Nominal size	DN(mm)	50 ~ 2000				50 ~ 500
公称压力 Nominal Pressure	PN(MPa)	0.6	1.0	1.6	2.5	4.0
试验压力 Test Pressure	强度试验 Strength test	0.9	1.5	2.4	3.75	6.0
	密封试验 Seal test	0.66	1.1	1.76	2.75	4.4
	气密封试验 Gas seal test	0.6	0.6	0.6	0.6	0.6
渗漏率 leakage	< $0.1 \times \text{DNmm}^3/\text{s}$ (符合 GB/T 13927-92 标准) < $0.1 \times \text{DNmm}^3/\text{s}$ (in line with GB/T 13927-92 standard)					
适用温度 suitable temperature	碳钢: $-29^{\circ}\text{C} \sim 425^{\circ}\text{C}$; 不锈钢、铬钼钢: $-40^{\circ}\text{C} \sim 550^{\circ}\text{C}$ Stainless steel, chrome molybdenum steel: $-40^{\circ}\text{C} \sim 550^{\circ}\text{C}$					
适用介质 applicable medium	空气、水、蒸气、煤气、油品以及酸、碱、盐带有弱腐蚀性介质等 Air, water, steam, gas, oil and acid, alkali, salt with a weak corrosive media, etc.					
驱动形式 drive type	蜗杆蜗轮传动、电传动 Worm worn transmission, electric transmission					

主要零件材料 Main components material

零件名称 Part name	材料 Material	零件名称 Part name	材料 Material
阀体 Body	碳钢、不锈钢、铬钼钢、合金钢 Carbon steel, stainless steel, chrome molybdenum steel, alloy steel	阀杆 Stem	2Cr13、1Cr13 不锈钢、铬钼钢 2Cr13, 1Cr13 stainless steel, chrome molybdenum steel
蝶板 Disc	碳钢、合金钢、不锈钢、铬钼钢 Carbon steel, alloy steel, stainless steel, chrome molybdenum steel	轴承 Bearing	奥氏体不锈钢、304 氮化 Austenitic stainless steel, 304 nitride
密封圈 Ring	不锈钢与耐高温石棉板组合成多层次 Stainless steel and high temperature asbestos combined into multi-level	填料 packing	柔性石墨 Flexible graphite

D373H.Y.F-10~25C.P.R.I



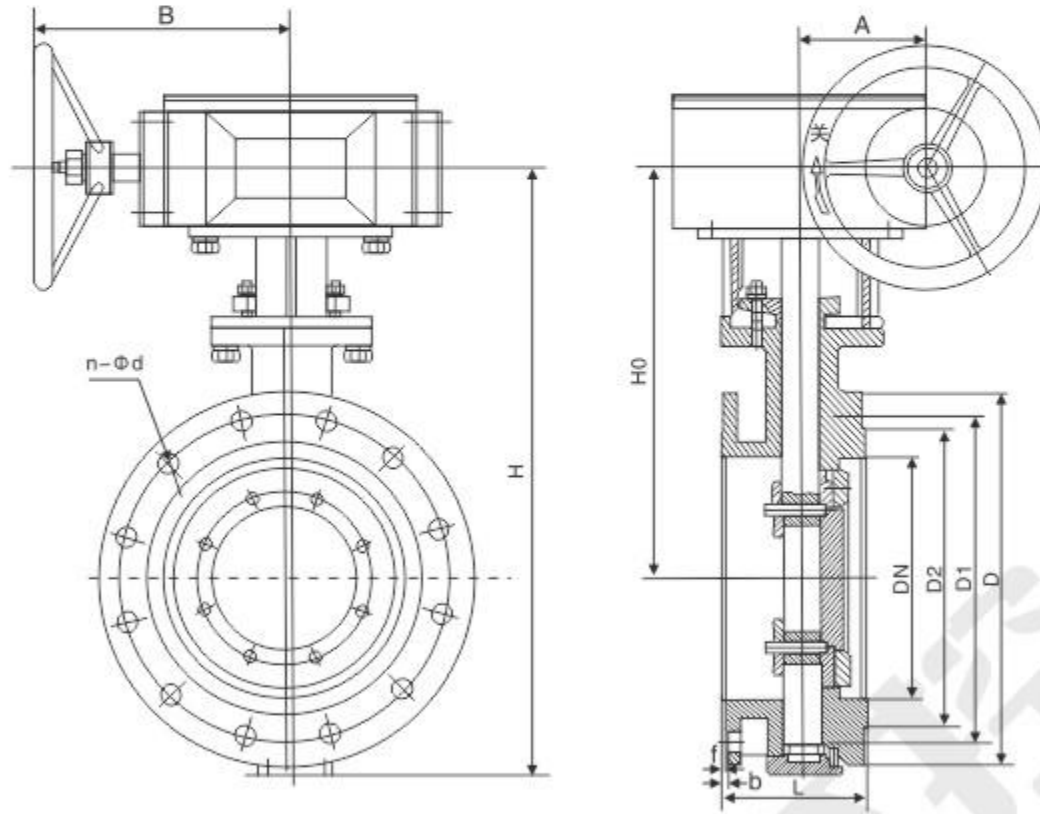
主要连接尺寸 Main connection dimensions

PN	标准值 normal					参考值 reference				
	DN	L	D	D1	Z-d	H	H0	A	B	W(kg)
1.0 Mpa	50	43	99	125	4-18	170	130	45	120	6.6
	65	46	118	145	4-18	170	145	45	120	8.2
	80	49	132	160	4-18	230	152	45	120	10.2
	100	64	156	180	4-18	320	192	45	120	13.6
	125	70	184	210	4-18	345	200	45	120	17.3
	150	70	211	240	4-22	385	230	66	150	22.3
	200	71	266	295	4-22	471	297	85	170	43.2
	250	76	319	350	4-22	533	327	85	170	63
	300	83	370	400	4-22	606	364	106	205	104.1
	350	92	420	460	4-22	694	404	106	205	133
1.6 Mpa	400	102	480	515	4-26	757	444	130	240	180
	450	114	530	565	4-26	814	472	155	240	236
	500	127	582	620	4-26	902	522	169	306	290
	600	154	682	725	4-30	1048	590	198	324	419
	700	165	704	840	4-30	1277	810	220	335	539
	800	190	901	950	4-33	1385	844	241	356	656
	900	203	1001	1050	4-33	1490	890	241	356	788
	1000	216	1112	1160	4-36	1620	950	241	356	887
	50	43	99	125	4-18	170	130	45	120	6.6
	65	46	118	145	4-18	170	145	45	120	8.2
80	49	132	160	4-18	230	152	45	120	10.2	
100	64	156	180	4-18	320	192	45	120	13.6	
125	70	184	210	4-18	345	200	45	120	17.3	
150	70	211	240	4-22	385	230	66	150	22.3	
200	71	266	295	4-22	471	297	85	170	43.2	
250	76	319	355	4-26	533	327	85	170	63	

PN	标准值 normal					参考值 reference				
	DN	L	D	D1	Z-d	H	H0	A	B	W(kg)
1.6 Mpa	300	83	370	410	4-26	606	364	106	205	104.1
	350	92	429	470	4-26	694	404	106	205	133
	400	102	480	525	4-26	757	444	130	240	180
	450	114	530	585	4-30	814	472	155	240	236
	500	127	582	650	4-30	902	522	169	306	290
	600	154	682	770	4-33	1048	590	198	324	419
	700	165	794	840	4-36	1277	810	220	335	539
	800	190	901	950	4-36	1385	844	241	356	656
	900	203	1001	1050	4-39	1490	890	241	356	788
	1000	216	1112	1170	4-39	1620	950	241	356	887
2.5 Mpa	50	43	99	125	4-42	170	130	45	120	17.5
	65	46	118	145	4-18	170	145	45	120	22.2
	80	49	132	160	4-18	310	233	206	90	30.5
	100	64	156	190	4-18	343	242	206	120	36.6
	125	70	184	220	4-22	385	254	206	120	44.3
	150	70	211	250	4-26	481	320	206	475	46.2
	200	71	274	310	4-26	547	355	442	610	92.3
	250	76	330	370	4-26	621	389	442	610	140.6
	300	83	389	430	4-30	653	423	558	670	166.5
	350	92	465	510	4-30	730	463	558	670	188.3
400	102	535	585	4-33	810	495	491	1120	254	
450	114	560	610	4-36	850	566	687	1120	311	
500	127	615	670	4-36	940	630	687	1120	413	
600	154	735	795	4-39	1150	727	710	1456	518	
700	165	820	875	4-36	1328	823	710	1456	768	
800	190	928	990	4-39	1452	910	710	1456	937	

注：可根据ANSI、JIS、DIN标准及非标尺寸生产。
Note: according to ANSI, JIS, DIN standards and production of non-standard size.

D343H.Y.F-10~16C.P.R.I



主要连接尺寸 Main connection dimensions

PN	标准值 normal							参考值 reference					
	DN	L	D	D1	D2	Z-d	b	f	H	H0	A	B	W(kg)
1.0 Mpa	50	108	165	125	99	4-18	20	2	170	130	45	120	7
	65	112	185	145	118	4-18	20	2	170	145	45	120	9.2
	80	114	200	160	132	8-18	20	2	230	152	45	120	11.6
	100	127	220	180	156	8-18	22	2	320	192	45	120	14
	125	140	250	210	184	8-18	22	2	345	200	45	120	18
	150	140	285	240	211	8-22	24	2	385	230	66	150	23
	200	152	340	295	266	8-22	24	2	471	297	85	170	44
	250	165	405	355	319	12-22	26	2	533	327	85	170	64
	300	178	445	400	370	12-22	26	2	606	364	106	205	105
	350	190	505	460	429	16-22	26	2	694	404	106	205	134
	400	216	565	515	480	16-26	26	2	757	444	130	240	181
	450	222	615	565	530	20-26	28	2	814	472	155	240	237
	500	229	670	620	582	20-26	28	2	902	522	169	306	292
	600	267	780	725	682	20-30	34	2	1048	590	198	324	421
	700	292	895	840	794	24-30	34	5	1277	810	220	335	541
800	318	1015	950	901	24-33	36	5	1385	844	241	356	658	
900	330	1115	1050	1001	28-33	38	5	1490	890	241	356	790	
1000	410	1230	1160	1112	28-36	38	5	1620	950	241	356	890	
1.6 Mpa	50	108	165	125	99	4-18	20	2	170	130	45	120	7
	65	112	185	145	118	4-18	20	2	170	145	45	120	9.2
	80	114	200	160	132	8-18	20	2	230	152	45	120	11.6
	100	127	220	180	156	8-18	22	2	320	192	45	120	14
	125	140	250	210	184	8-18	22	2	345	200	45	120	18
	150	140	285	240	211	8-22	24	2	385	230	66	150	23
	200	152	340	295	266	12-22	24	2	471	297	85	170	44
	250	165	405	355	319	12-26	26	2	533	327	85	170	64

注：可根据ANSI、JIS、DIN标准及非标尺寸生产。
Note: according to ANSI, JIS, DIN standards and production of non-standard size.

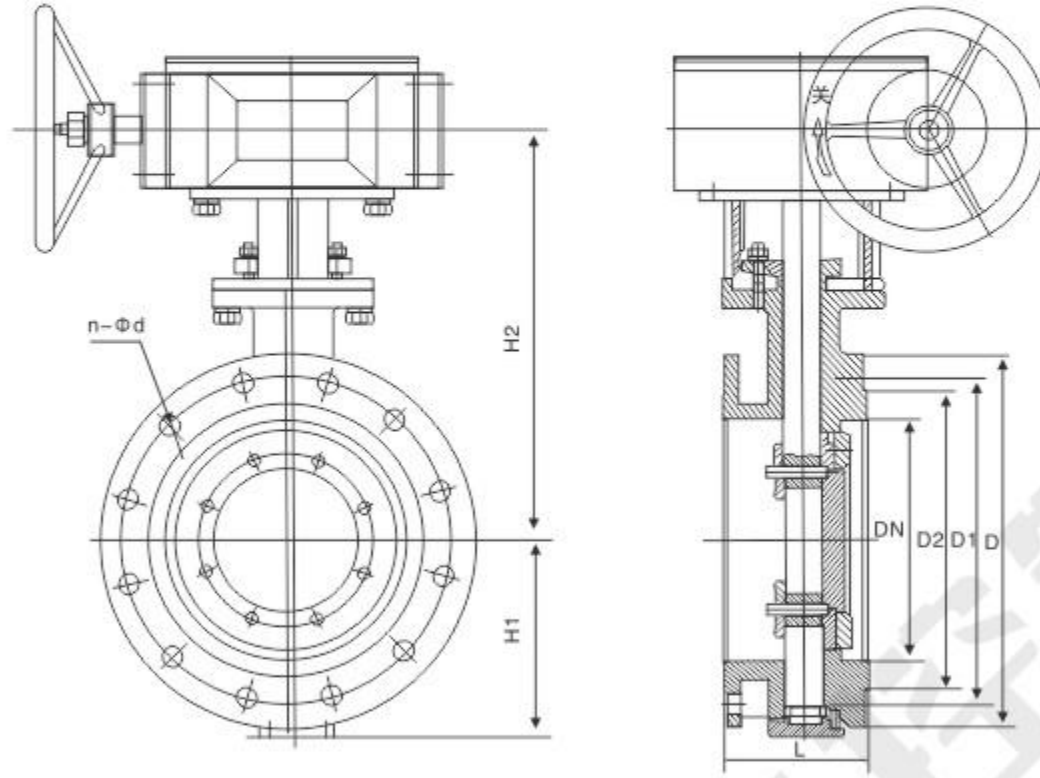
D343H.Y.F-10~16~40C.P.R.I

主要连接尺寸 Main connection dimensions

PN	标准值 normal							参考值 reference					
	DN	L	D	D1	D2	Z-d	b	f	H	H0	A	B	W(kg)
1.6 Mpa	300	178	460	410	370	12-26	28	2	694	364	106	205	105
	350	190	520	470	429	16-26	30	2	606	404	106	205	134
	400	216	580	525	480	16-30	32	2	757	444	130	240	181
	450	222	640	585	548	20-30	40	2	814	472	155	240	237
	500	229	715	650	609	20-33	44	2	902	522	169	306	292
	600	267	840	770	720	20-36	54	2	1048	590	198	324	421
	700	292	910	840	794	24-36	40	5	1277	810	220	335	541
	800	318	1025	950	901	24-39	42	5	1385	844	241	356	658
	900	330	1125	1050	1001	28-39	44	5	1490	890	241	356	790
	1000	410	1225	1170	1112	28-42	46	5	1620	950	241	356	890
2.5 Mpa	50	108	165	125	99	4-18	20	2	170	130	45	120	13
	65	112	185	145	118	8-18	22	2	265	210	35	90	15
	80	114	200	160	132	8-18	24	2	310	233	35	90	19
	100	127	235	190	156	8-22	24	2	343	242	45	120	23
	125	140	270	220	184	8-26	26	2	385	254	45	120	45
	150	140	300	250	211	8-26	28	2	445	580	66	150	66
	200	152	360	310	274	12-26	30	2	510	297	85	170	107
	250	165	425	370	330	12-30	32	2	569	339	85	170	136
	300	178	485	430	389	16-30	34	2	653	375	106	205	185
	350	190	555	490	448	16-33	38	2	730	420	106	205	240
	400	216	620	550	503	16-36	40	2	810	463	130	240	294
	450	222	670	600	548	20-36	46	2	850	495	155	240	423
	500	229	730	660	609	20-36	48	2	940	566	169	306	546
	600	267	845	770	720	20-39	58	2	1150	630	198	324	660
700	292	960	875	820	24-42	50	5	1195	727	220	335	795	
800	318	1085	990	609	20-36	54	5	1268	810	45	356	894	
4.0 Mpa	50	108	165	125	99	4-18	20	2	170	130	35	120	13
	65	112	185	145	118	8-18	22	2	265	210	35	90	15
	80	114	200	160	132	8-18	20	2	310	233	35	90	19
	100	127	235	190	156	8-22	24	2	343	242	45	120	25
	125	140	270	220	184	8-26	26	2	385	254	45	120	46
	150	140	300	250	211	8-26	28	2	445	280	66	150	67
	200	152	375	320	284	12-30	34	2	510	297	85	170	109
	250	165	450	385	345	12-33	38	2	569	339	85	170	138
	300	178	515	450	409	16-33	42	2	653	375	106	205	186
	350	190	580	510	465	16-36	46	2	730	420	106	205	241
	400	216	660	585	535	16-39	50	2	810	463	130	240	295
	450	222	685	610	560	20-39	57	2	850	495	155	240	424
	500	229	755	670	615	20-42	57	2	940	566	169	306	547
	600	267	890	795	735	20-48	72	2	1150	630	198	324	662
700	292	995	900	835	24-54	68	5	1195	727	220	335	797	
800	318	1035	1030	960	24-58	76	5	1268	810	241	356	898	

注：可根据ANSI、JIS、DIN标准及非标尺寸生产。
Note: according to ANSI, JIS, DIN standards and production of non-standard size.

D₆³43H-₉⁴⁰C、P、R



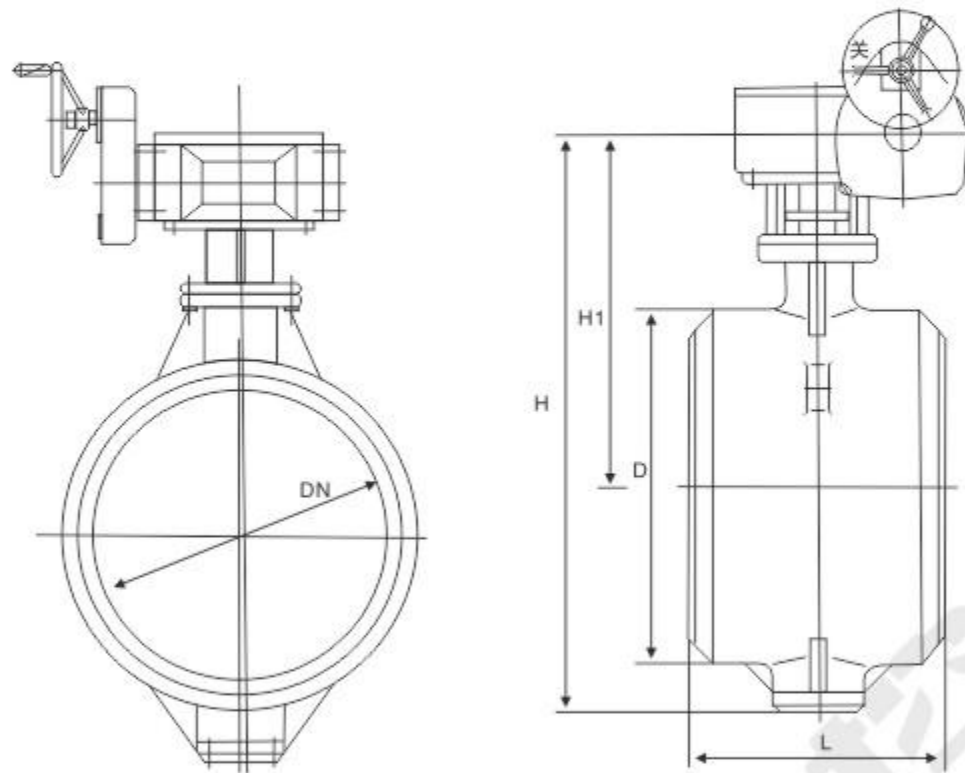
主要连接尺寸 Main connection dimensions

公称通径 DN(mm)	主要尺寸 Main dimensions			法兰尺寸和螺栓规格 Flange dimensions and bolt specifications							
				4.0MPa				6.4MPa			
	L	H1	H	D	D1	D2	n-φd	D	D1	D2	n-φd
100	190	285	107	235	190	156	8-22	250	200	156	8-26
125	200	300	123	270	220	184	8-26	295	211	184	8-30
150	240	320	140	300	250	211	8-26	345	280	244	8-33
200	230	370	180	375	320	284	12-30	415	345	284	12-36
250	250	420	200	450	385	345	12-33	470	400	345	12-36
300	270	500	250	515	450	409	16-33	530	460	409	16-36
350	290	530	270	580	510	465	16-36	600	525	465	16-39
400	310	570	300	660	585	535	16-39	670	585	535	16-42
450	330	600	320	685	610	560	20-39	685	610	560	20-42
500	350	680	360	755	670	615	20-42	800	705	640	20-54
600	390	750	420	890	795	735	20-48	930	820	750	20-58
700	430	880	480	995	900	835	24-48	/	/	/	/
800	470	1000	600	1140	1030	960	24-58	/	/	/	/

注：可根据ANSI、JIS、DIN标准及非标尺寸生产。

Note: according to ANSI, JIS, DIN standards and production of non-standard size

D363H-10-40C



主要性能规范 Main Performance Specifications

公称压力PN(MPa)	强度试验Strength test (MPa)	密封试验Seal test (MPa)	适用温度(℃) Suitable temperature	适用介质 Applicable medium
1.0	1.5	1.1	≤425℃	水、蒸气、煤气、油品、 热空气、天然气等介质 Water, steam, gas, oil, hot air, natural gas and other media
1.6	2.4	1.76		
2.5	3.8	2.75		
4.0	6.0	4.4		

主要零件材料 Main parts and materials

阀体、蝶板 Valve body, butterfly plate	阀杆Stem	密封圈Ring	填料packing
铸钢、铸不锈钢 Cast steel, cast stainless steel	不锈钢stainless steel	不锈钢+石墨片 Stainless steel + graphite sheet	柔性石墨Flexible Graphite

主要连接尺寸 Main connection dimensions

公称通径 DN(mm)	L	1.0MPa		1.6MPa		2.5MPa		4.0MPa	
		H1	H	H1	H	H1	H	H1	H
100	190	280	390	280	390	280	390	280	390
125	200	300	420	300	420	300	420	300	420
150	210	320	460	320	460	320	460	320	460
200	230	370	550	370	550	370	550	370	550
250	250	420	620	420	620	420	620	420	620
300	270	500	750	500	750	500	750	500	750
350	290	530	800	530	800	530	800	530	800
400	310	570	870	570	870	570	870	570	870
450	330	600	920	600	920	600	920	600	920
500	350	680	1040	680	1040	680	1040	680	1040
600	390	750	1190	750	1190	750	1190	750	1190
700	430	810	1290	810	1290	810	1290	/	/
800	470	905	1440	905	1440	905	1440	/	/
900	510	960	1550	960	1550	960	1550	/	/
1000	550	1010	1650	1010	1650	1010	1650	/	/
1200	630	1175	1920	1175	1920	1175	1920	/	/
1400	710	1310	2170	1310	2170	/	/	/	/
1600	790	1460	2440	1460	2440	/	/	/	/
1800	870	1560	2650	1560	2650	/	/	/	/
2000	950	1670	2860	1670	2860	/	/	/	/

用途

本蝶阀系吸收、消化国外技术，采用三维偏心多层次金属密封结构，适用介质温度 $\leq 600^{\circ}\text{C}$ 冶金、电力、石油化工、空气、煤气、可燃气体，以及给排水等介质管道上作调节流量和截断流体的最佳装置。

Uses

The valve system to absorb, digest foreign technology, using three-dimensional eccentric multi-level metal seal structure, applicable to medium temperature = 600°C metallurgy, electric power, petrochemical, air, gas, combustible gas, and water supply and drainage pipes and other media to make adjustments on flow and The best cut off fluid device.

特点

本双向蝶阀采取多层次三偏心金属硬密封结构，不仅具有普通多层次三偏心金属硬密封蝶阀的全部优良性能，由于在设计上合理地减小了径向偏心值，在关闭状态下阀杆所受力矩较小，处于静平衡，同时，蝶板密封圈采用了优质碳素材料与高韧性不锈钢组成多层次结构，不仅柔中有刚能与阀座保持最佳密合，而且具有非常良好的自动补偿功能，特别在较大温差的工况条件下，可以消除由此引起的结构变形对密封性能的影响，又由于在加工和装配过程采用了预应力方法，使阀门在反向受压时产生的相对位移得到充分补偿，因此本蝶阀不论正向或反向受压，均能在全额压差下达到泄漏量为零。

Feature

The multi-layered three-way valve to seal structure eccentricity metal hard, not only with general multi-level three metal seal eccentric butterfly valve all the excellent performance, reasonable because the design reduces the radial offset value, in the closed state Fa pole moment suffered less in static balance, while the disc sealing ring used with high quality carbon material toughness of stainless steel multi-level structure, not only have soft valve seat just to keep with the most on behalf of the good seal, but also very good automatic compensation function, in particular the large temperature differences of working conditions, it can eliminate the structural deformation of the resulting impact on the sealing performance, but also due to processing and assembly process used to stress ways in which the valve in the anti- When the pressure generated by relative displacement of full compensation, so the valve, whether positive or negative pressure, can achieve the full amount of leakage under pressure to zero.

采用标准 Standard

制造标准 Manufacturing Standards	JB/T 8527-97	法兰标准Flange Standard	GB9113
结构长度标准 Structure of the length of the standard	GB 12221-89	检验标准Test Standard	GB/T 13927-92

主要性能规范 Main Performance Specifications

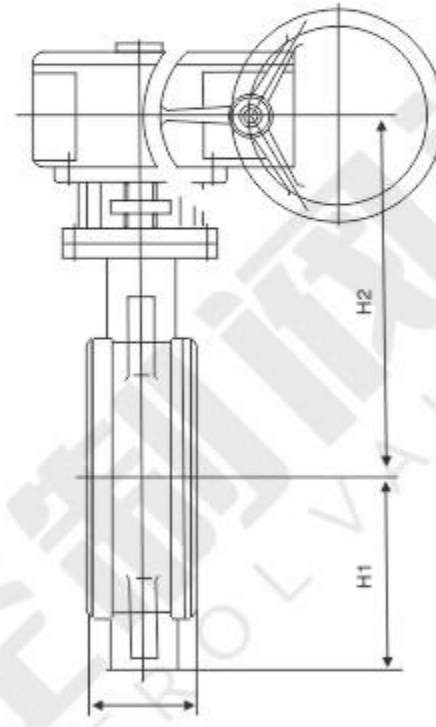
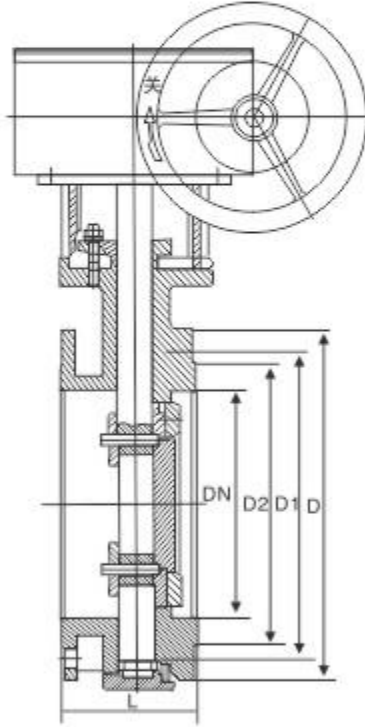
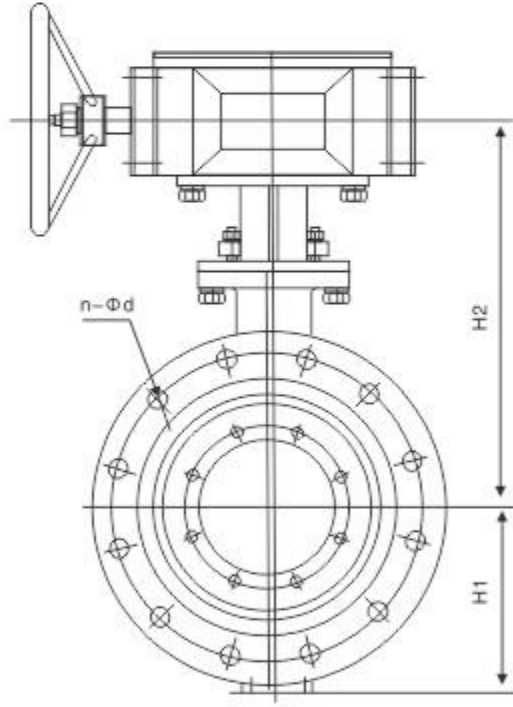
公称通径Nominal designs	DN(mm)	50-2000				50 ~ 500
公称压力Nominal Pressure	PN(MPa)	0.6	1.0	1.6	2.5	4.0
试验压力Test Pressure	强度试验Strength test	0.9	1.5	2.4	3.75	6.0
	正向密封试验Forward seal test	0.66	1.1	1.76	2.75	4.4
	反向密封试验Reverse seal test	0.66	1.1	1.76	2.75	4.4
	气密封试验Gas seal test	0.6	0.6	0.6	0.6	0.6
渗漏率Leakage	< $0.1 \times \text{DNmm}^3/\text{s}$ (符合GB/T 13927-92标准) Comply with GB / T 13927-92 standard)					
适用温度Suitable temperature	碳钢: $-29^{\circ}\text{C} \sim 260^{\circ}\text{C}$; 不锈钢、铬钼钢: $-40^{\circ}\text{C} \sim 550^{\circ}\text{C}$ Stainless steel, chrome molybdenum steel: $-40^{\circ}\text{C} \sim 550^{\circ}\text{C}$					
适用介质Applicable medium	空气、水、蒸气、煤气、油品以及酸、碱、盐带有弱腐蚀性介质等 Air, water, steam, gas, oil and acid, alkali, salt with a weak corrosive media, etc.					
驱动形式Drive Type	蜗杆蜗轮传动、电传动 Worm worn transmission, electric transmission					

主要零件材料 Main components material

零件名称Part Name	材料 Materials	零件名称Part Name	材料 Materials
阀体Body	碳钢、不锈钢、铬钼钢、合金钢 Carbon steel, stainless steel, chrome molybdenum steel, alloy steel	阀杆Stem	2Cr13、1Cr13不锈钢、铬钼钢 Stainless steel, chrome molybdenum steel
蝶板Disc	碳钢、合金钢、不锈钢、铬钼钢 Carbon steel, alloy steel, stainless steel, chrome molybdenum steel	轴承Bearing	奥氏体不锈钢、304氮化 Austenitic stainless steel, 304 nitride
密封圈Ring	不锈钢与耐高温石墨片组合成多层次 Stainless steel and high-temperature graphite sheet to form a multi-level	填料Packing	柔性石墨 Flexible Graphite

D343Hs-⁶/₁₀ C、P、R

D373Hs-⁶/₁₀ C、P、R



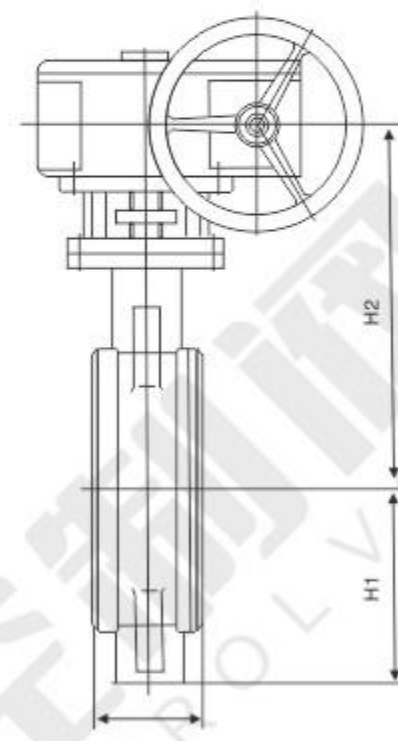
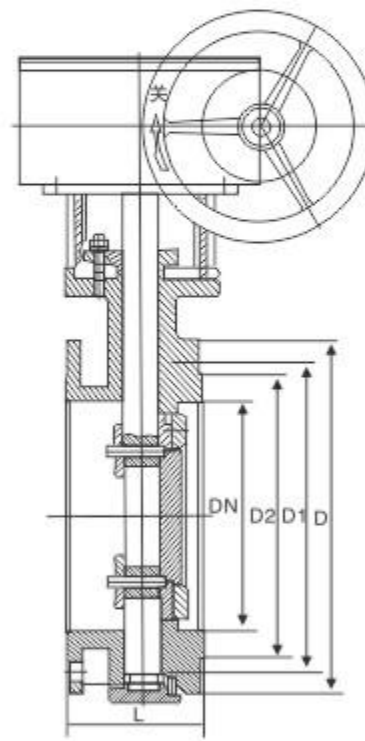
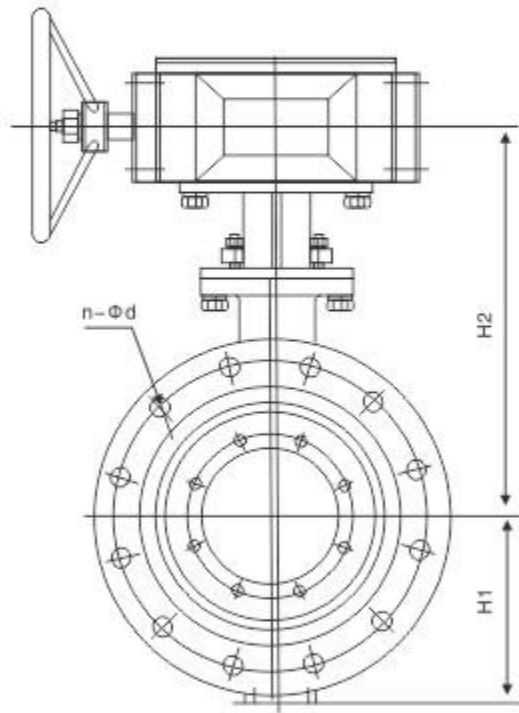
主要连接尺寸 Main connection dimensions

公称通径 DN(mm)	主要尺寸 Main dimensions				法兰尺寸和螺栓规格 Flange dimensions and bolt specifications							
					0.6MPa				1.0MPa			
	L	L1	H2	H1	D	D1	D2	n-Φd	D	D1	D2	n-Φd
100	127	56	285	107	210	170	144	4-19	220	180	156	8-18
125	140	64	300	123	240	200	174	8-19	230	210	184	8-18
150	140	70	320	140	265	225	199	8-19	285	240	211	8-18
200	152	71	370	180	320	280	254	8-19	340	295	266	8-22
250	165	76	420	200	375	335	309	12-19	395	350	310	12-22
300	178	83	500	250	440	395	363	12-23	445	400	370	12-22
350	190	92	530	270	490	445	413	12-23	505	460	429	16-22
400	216	102	570	300	540	495	463	16-23	565	515	480	16-26
450	222	114	600	320	595	550	518	16-23	615	565	530	16-26
500	229	127	680	360	645	600	568	20-23	670	620	582	20-26
600	267	154	750	420	755	705	667	20-26	780	725	682	20-30
700	292	165	810	480	860	810	772	24-26	895	840	794	24-30
800	318	190	905	540	975	920	878	24-31	1015	950	901	24-33
900	330	203	960	590	1075	1020	978	24-31	1115	1050	1001	28-33
1000	410	216	1010	640	1175	1120	1078	28-31	1230	1160	1112	28-36
1200	470	254	1175	750	1405	1340	1295	32-34	1455	1380	1328	32-39
1400	530	/	1310	860	1630	1560	1510	36-37	1675	1590	1530	36-42
1600	600	/	1460	980	1830	1760	1710	40-37	1915	1820	1750	40-48
1800	670	/	1560	1090	2045	1970	1918	44-40	/	/	/	/
2000	760	/	1670	1190	2265	2180	2125	48-43	/	/	/	/

注：可根据ANSI、JIS、DIN标准及非标尺寸生产。
Note: according to ANSI, JIS, DIN standards and production of non-standard size.

D343Hs-⁶/₂₅ C、P、R

D373Hs-⁶/₂₅ C、P、R



主要连接尺寸 Main connection dimensions

公称通径 DN(mm)	主要尺寸 Main dimensions				法兰尺寸和螺栓规格 Flange dimensions and bolt specifications							
					1.6MPa				2.5MPa			
	L	L1	H2	H1	D	D1	D2	n-φd	D	D1	D2	n-φd
100	127	56	285	107	220	180	156	8-18	235	190	156	8-22
125	140	64	300	123	250	210	184	8-18	270	220	184	8-26
150	140	70	320	140	285	240	211	8-22	300	250	211	8-26
200	152	71	370	180	340	295	266	12-22	360	310	274	12-26
250	165	76	420	200	405	355	319	12-26	425	370	330	12-30
300	178	83	500	250	460	410	370	12-26	485	430	389	16-30
350	190	92	530	270	520	470	429	16-26	555	490	448	16-33
400	216	102	570	300	580	525	480	16-30	620	550	503	16-36
450	222	114	600	320	640	585	548	20-30	670	600	548	20-36
500	229	127	680	360	715	650	609	20-33	730	660	609	20-36
600	267	154	750	420	840	770	720	20-36	845	770	720	20-39
700	292	165	810	480	910	840	794	24-36	960	875	820	24-42
800	318	190	905	540	1025	950	901	24-39	1085	990	928	24-48
900	330	203	960	590	1125	1050	1001	28-39	/	/	/	/
1000	410	216	1010	640	1255	1170	1112	28-42	/	/	/	/
1200	470	254	1175	750	1485	1390	1328	32-48	/	/	/	/

注：可根据ANSI、JIS、DIN标准及非标尺寸生产。
Note: according to ANSI, JIS, DIN standards and production of non-standard size.

产品简介与用途

双偏心四氟骨架密封蝶阀是介于软密封橡胶蝶阀和金属密封蝶阀之间的一种蝶阀，它既具有橡胶密封蝶阀良好的密封性能，又具有金属密封，耐高温、耐压等特点。因此被广泛应用于介质温度 $\leq 180^{\circ}\text{C}$ 的石油、冶金、电力、市政工程、水厂等管道上，作定向控制介质流向的启闭机构。

特点

- 1、四氟阀座采用补偿性骨架，彻底克服了四氟材料热胀冷缩带来的不利影响。
- 2、蝶板密封面采用三维抛物线曲面，蝶板流线造型，流体阻力小、运行流畅。
- 3、阀座与阀体分装，便于维修、调整和装配。
- 4、流量特性趋于正比例特性、调节性能好，在 $0^{\circ} \sim 90^{\circ}$ 范围内可任意调节流量。

Products and uses

Double eccentric butterfly valve lies between the PTFE sealing the soft skeleton rubber seal and metal sealing butterfly valve butterfly valve between a butterfly, both with a rubber sealing butterfly valve a good sealing performance, but also has metal seals, heat resistant pressure and so on. Which is widely used in medium temperature = 180°C oil, metallurgy, electric power, municipal engineering, water and other pipe for directional control of media flows hoist body.

Feature

- 1、PTFE valve seat by a compensatory framework, PTFE material completely overcome the adverse effects of thermal expansion and contraction.
- 2、The disc sealing surface of three-dimensional parabolic surface, the disc flow line modeling, fluid resistance small, run smoothly.
- 3、Valve seat and valve-packing, easy maintenance, adjustment and assembly.
- 4、Flow characteristics tend to feature direct proportion to regulate the performance, in the $0^{\circ} \sim 90^{\circ}$ range can be adjusted flow.

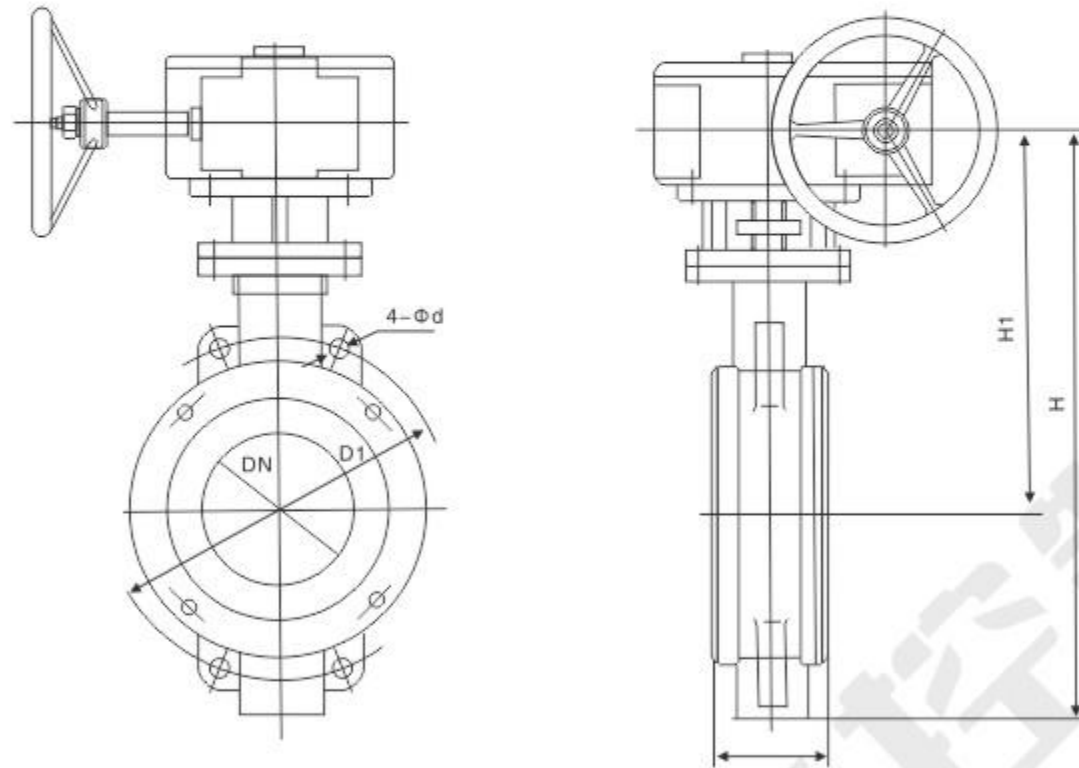
主要性能规范 Main Performance Specifications

公称口径DN(mm)		50 ~ 1000	
公称压力PN(mm)		1.0MPa	1.6MPa
试验压力 Test pressure	强度Intensity	1.5MPa	2.4MPa
	密封Seal	1.1MPa	1.76MPa
适用温度Suitable temperature		$-29^{\circ}\text{C} \sim 180^{\circ}\text{C}$	
适用介质Applicable medium		适用介质空气、蒸汽、水、油类、酸、碱、盐等（介质不含过多颗粒杂质） Air, steam, water, oil, acid, alkali, salt, etc. (medium, without excessive particle impurities)	
驱动方式Drive Mode		驱动方式手柄、蜗轮传动、电动、气动、液动 Handle, worm gear drive, electric, pneumatic, hydraulic	

主要零件材料 Main parts and materials

零件名称Part Name	阀体Body	蝶板Butterfly Plate	阀杆Stem	密封圈Ring	填料Packing
材料Material	碳钢、不锈钢、球墨铸铁 Carbon steel, stainless steel, Iron	碳钢、不锈钢、球墨铸铁 (密封面堆焊、镀硬铬) Carbon steel, stainless steel, Iron (Sealing surface welding, hard chrome plated)	不锈钢Stainless	四氟骨架密封圈 PTFE ring skeleton	柔性石墨 Flexible Graphite

D₆³73F-₉¹⁰ C、P、R



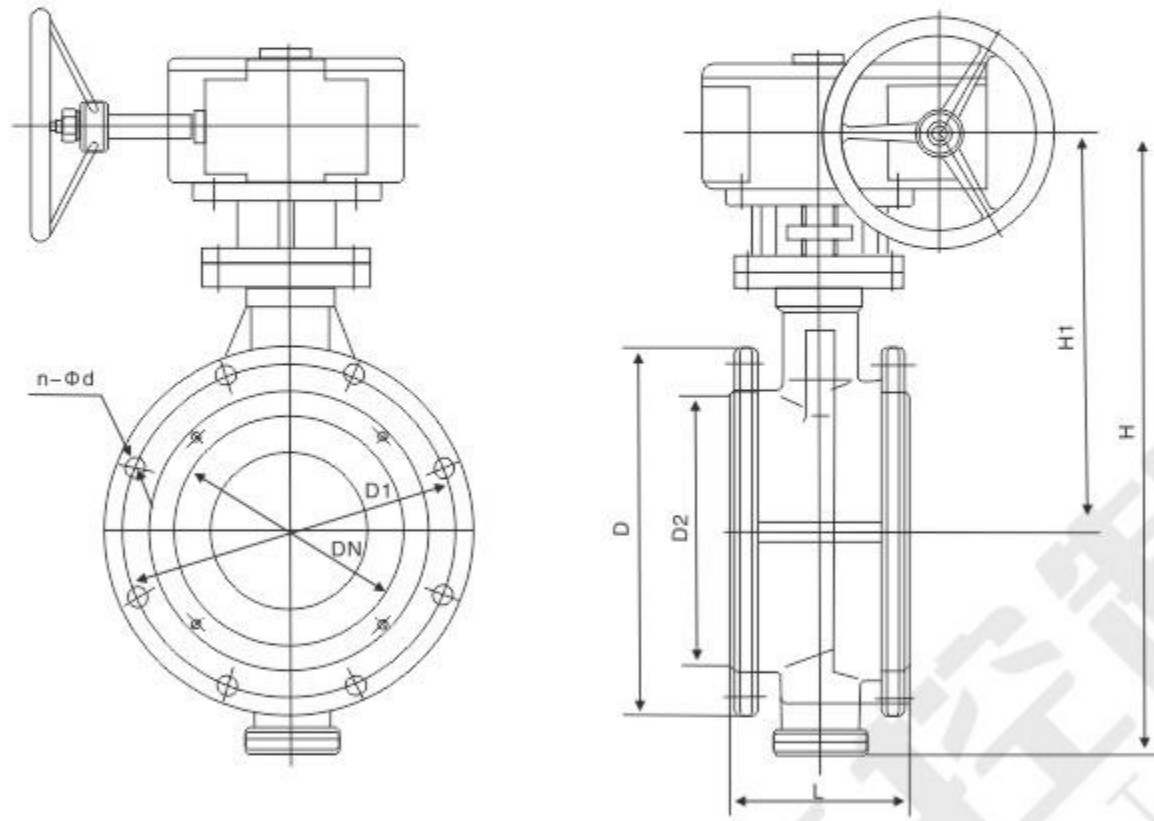
主要连接尺寸 Main connection dimensions

公称通径 DN(mm)	主要尺寸 Main dimensions			法兰尺寸和螺栓规格 Flange dimensions and bolt specifications					
				1.0MPa		1.6MPa		2.5MPa	
	L	H1	H	D1	n-Φd	D1	n-Φd	D1	4-Φd
50	43	255	340	125	4-18	125	4-18	125	4-18
65	46	280	370	145	4-18	145	4-18	145	4-18
80	49	285	385	160	4-18	160	4-18	160	4-18
100	56	310	430	180	4-18	180	4-18	190	4-22
125	64	310	440	210	4-18	210	4-18	220	4-26
150	70	315	475	240	4-23	240	4-22	250	4-26
200	71	380	590	295	4-23	295	4-22	310	4-26
250	76	460	710	350	4-23	355	4-26	370	4-30
300	83	475	725	400	4-23	410	4-26	430	4-30
350	92	510	830	460	4-23	470	4-26	490	4-33
400	102	550	900	515	4-25	525	4-30	550	4-36
450	114	590	970	565	4-25	585	4-30	600	4-36
500	127	610	1030	620	4-25	650	4-33	660	4-36
600	154	660	1150	725	4-30	770	4-36	770	4-39
700	165	730	1220	840	4-30	840	4-36	875	4-42
800	190	810	1300	950	4-34	950	4-39	990	4-48
900	203	930	1480	1050	4-34	1050	4-39	1090	4-48
1000	216	1020	1600	1160	4-34	1170	4-42	1210	4-56

注：可根据ANSI、JIS、DIN标准及非标尺寸生产。

Note: according to ANSI, JIS, DIN standards and production of non-standard size.

D₉³43F-₁₆¹⁰C、P、R

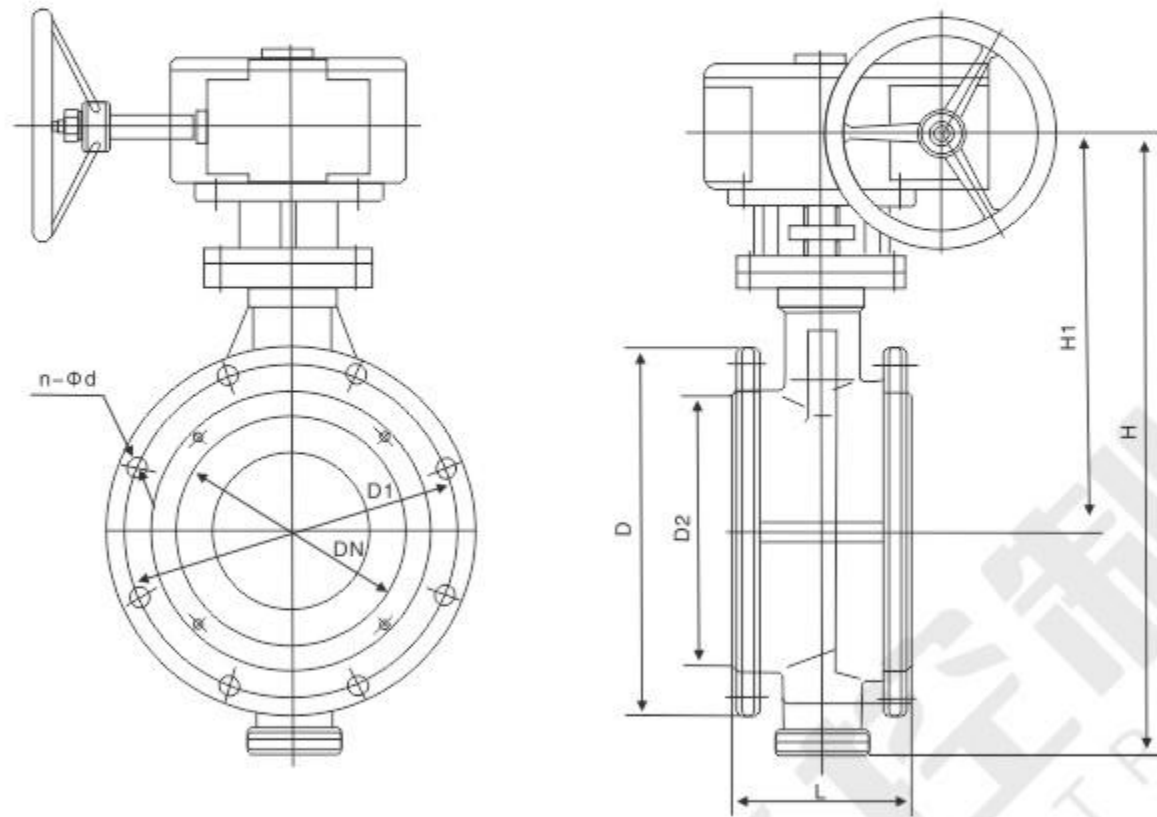


主要连接尺寸 Main connection dimensions

公称通径 DN(mm)	主要尺寸 Main dimensions			法兰尺寸和螺栓规格 Flange dimensions and bolt specifications							
				1.0MPa				1.6MPa			
	L	H1	H	D	D1	D2	n-Φd	D	D1	D2	n-Φd
50	108	265	350	160	125	100	4-18	165	125	99	4-18
65	112	275	365	180	145	120	4-18	185	145	118	4-18
80	114	280	380	195	160	135	4-18	200	160	132	8-18
100	127	300	425	215	180	155	8-18	220	180	156	8-18
125	140	315	450	245	210	185	8-18	250	210	184	8-18
150	140	325	470	280	240	210	8-23	285	240	244	8-22
200	152	395	595	335	295	265	8-23	340	295	266	12-22
250	165	420	620	390	350	320	12-23	405	355	319	12-26
300	178	500	750	440	400	368	12-23	460	410	370	12-26
350	190	530	800	500	460	428	16-23	520	470	429	16-26
400	216	570	870	565	515	482	16-25	580	525	480	16-30
450	222	600	920	615	565	532	20-25	640	585	548	20-30
500	229	680	1040	670	620	585	20-25	715	650	609	20-33
600	267	750	1170	780	725	685	20-30	840	770	720	20-36
700	292	810	1290	895	840	800	24-30	910	840	794	24-36
800	318	905	1440	1010	950	905	24-34	1025	950	901	24-39
900	330	960	1550	1110	1050	1005	28-34	1125	1050	1001	28-39
1000	410	1010	1650	1220	1160	1115	28-34	1255	1170	1112	28-42

注：可根据ANSI、JIS、DIN标准及非标尺寸生产。
Note: according to ANSI, JIS, DIN standards and production of non-standard size.

D₉³43F-₄₀²⁵ C、P、R



主要连接尺寸 Main connection dimensions

公称通径 DN(mm)	主要尺寸 Main dimensions			法兰尺寸和螺栓规格 Flange dimensions and bolt specifications							
				2.5MPa				4.0MPa			
	L	H1	H	D	D1	D2	n-Φd	D	D1	D2	n-Φd
50	108	265	350	165	125	99	4-18	165	125	99	4-18
65	112	275	365	185	145	118	8-18	185	145	118	8-18
80	114	280	380	200	160	132	8-18	200	160	132	8-18
100	127	300	425	235	190	156	8-22	235	190	156	8-22
125	140	315	450	270	220	184	8-26	270	220	184	8-26
150	140	325	470	300	250	211	8-26	300	250	211	8-26
200	152	395	595	360	310	274	8-23	375	320	284	12-30
250	165	420	620	425	370	330	12-26	450	385	345	12-33
300	178	500	750	485	430	389	12-30	515	450	409	16-33
350	190	530	800	555	490	448	16-30	580	510	465	16-36
400	216	570	870	620	550	503	16-33	660	585	535	16-39
450	222	600	920	670	600	548	16-36	685	610	560	20-39
500	229	680	1040	730	660	609	20-36	755	670	615	20-42
600	267	750	1170	845	770	720	20-36	890	795	735	20-48
700	292	810	1290	960	875	820	20-39				
800	318	905	1440	1085	990	928	24-42				
900	330	960	1550	1185	1090	1028	24-48				
1000	410	1010	1650	1320	1210	1140	28-48				

注：可根据ANSI、JIS、DIN标准及非标尺寸生产。

Note: according to ANSI, JIS, DIN standards and production of non-standard size.

用途

本系列蝶阀采用偏心结构设计，其阀门主要结构由阀体、蝶板、阀座、阀杆及传动机构等部件组成，阀座采用可脱卸构造，并根据不同介质的物理化学介质特性，选用相应的耐腐蚀、耐光、耐老化材质，可广泛应用于给排水、空调、石油、化工、食品、医药、能源系统等流体管线上作为调节和截流装置使用。

Uses

This series of butterfly valve eccentric structure design, its main structure of the valve from the valve body, butterfly plates, valve seat, stem, and transmission parts such as the composition, valve seat with detachable construction, and media or under different physical and chemical characteristics of medium, choose the appropriate anti-corrosion, light, anti-aging material can be widely used in water supply and drainage, air conditioning, petroleum, chemical, food, medicine, energy systems, fluid lines, as a regulator and the closure device.

产品特点

- 1、阀座采用与阀体整体硫化，一体性好，便于现场维修，并采用全流量设计，不受杂质卡阻影响，两端的联体环型密封线使管道安装无须附加垫片而保持可靠密封，并可根据不同使用要求选用不同材质。
- 2、结构简单，开启迅速。蝶板材料采用流线型设计，可双向使用，流阻小，流量特性优异。
- 3、寿命长，启闭次数多。
- 4、双向密封，试验泄漏为零。
- 5、流量特性趋于直线，调节性能好。

Features

1. Valve seat and valve body as a whole using sulfide, one good, easy on-site maintenance, and use full-flow design, free from impurities card blocking effects of both ends of the conjoined ring seal line to make the pipe installation without additional pads while maintaining a reliable seal, according to different application requirements and can choose different materials.
2. Simple structure, to open quickly. Butterfly board material with streamlined design, can be bi-directional use, flow resistance is small, excellent flow characteristics.
3. Long life, open and close more times.
4. Two-way seal, zero leakage test.
5. Flow characteristics tend to a straight line to regulate the performance is good.

采用标准 Adoption Standard

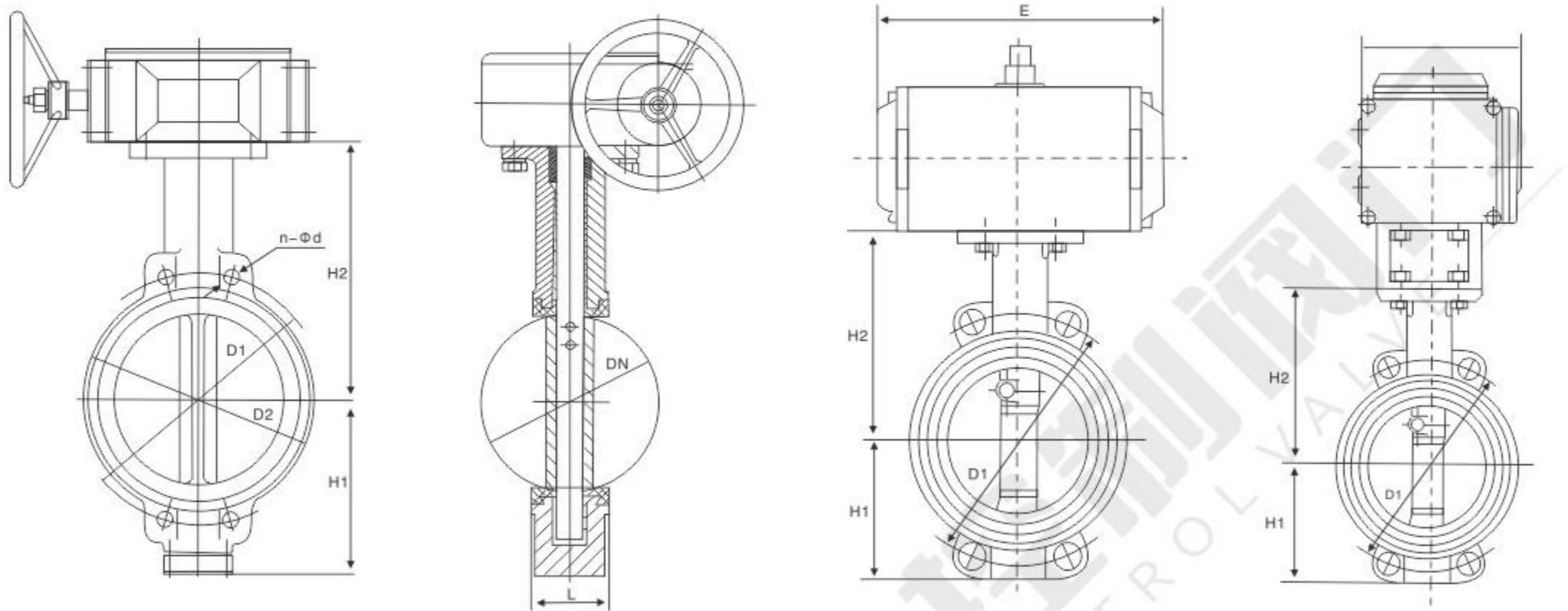
制造标准 Manufacturing Standards	GB 12238-89	法兰标准Flange Standard	GB/T 17241.6 GB/T 9113.1
结构长度标准 Structure of the length of the standard	GB 12221-89	检验标准Test Standard	GB/T 13927-92

主要性能规范 Main Performance Specifications

型号Model	公称压力 PN(MPa)	壳体试验压力 Shell test pressure PS(MPa)	密封试验压力 Sealing test pressure (Mpa)	工作温度Work Temperature (°C)	适用介质 Applicable medium
D ₉ ³ 671X-6	0.6	0.9	0.66	≤150℃	水、油品 Water, oil
D ₉ ³ 671X-10	1.0	1.5	1.1		
D ₉ ³ 671X-16	1.6	2.4	1.76		

主要零件材料 Main parts and materials

零件名称Part Name	阀体、蝶板 Valve body, butterfly plate	阀杆Stem	密封圈Seal ring	填料Packing
材料Material	灰铸铁Gray Iron 球墨铸铁Ductile Iron 铸钢Cast steel 不锈钢Stainless steel	中碳钢 不锈钢 (2Cr13) 1Cr18Ni9Ti Medium carbon steel Stainless steel (2Cr13) 1Cr18Ni9Ti	天然胶NR 丁晴橡胶NBR 乙丙橡胶EPDM 聚四氟乙烯PTFE 氟橡胶Viton	柔性石墨Flexible Graphite



主要连接尺寸 Main connection dimensions

公称通径 DN(mm)	主要尺寸 Main dimensions					法兰尺寸和螺栓规格 Flange dimensions and bolt specifications					
						0.6MPa		1.0MPa		1.6MPa	
	L	H1	H2	E	F	D1	n-Φ	D1	n-Φ	D1	n-Φ
50	43	80	160	137	109	110	4-Φ14	120	4-Φ19	125	4-Φ19
65	46	88	175	204	109	130	4-Φ14	136	4-Φ19	145	4-Φ19
80	46	96	180	204	109	150	4-Φ19	160	4-Φ19	160	4-Φ19
100	52	115	200	230	135	170	4-Φ19	185	4-Φ19	180	4-Φ19
125	56	128	213	271	135	200	4-Φ19	215	4-Φ19	210	4-Φ19
150	56	140	225	305	153	225	4-Φ19	238	4-Φ23	240	4-Φ23
200	60	175	260	380	218	280	4-Φ19	295	4-Φ23	295	4-Φ23
250	68	202	290	462	218	335	4-Φ19	357	4-Φ23	355	4-Φ28
300	78	242	330	555	218	395	4-Φ23	407	4-Φ23	410	4-Φ28
350	78	266	360			445	4-Φ23	467	4-Φ23	470	4-Φ28
400	102	298	390			495	4-Φ23	515	4-Φ28	525	4-Φ31
450	114	315	410			550	4-Φ23	565	4-Φ28	585	4-Φ31
500	127	348	430			600	4-Φ23	620	4-Φ24	650	4-Φ30
600	154	400	490			705	4-Φ26	725	4-Φ27	770	4-Φ33
700	165	520	550			810	4-Φ26	840	4-Φ27	840	4-Φ33
800	190	591	610			920	4-Φ31	950	4-Φ30	950	4-Φ36
900	203	660	680			1020	4-M27	1050	4-M30	1050	4-M36
1000	216	670	730			1120	4-M27	1160	4-M33	1170	4-M39
1200	254	780	835			1340	4-M30	1380	4-M36	1390	4-M45
1400	279	890	935			1560	4-M33	1590	4-M39	1590	4-M45
1600	318	1000	1035			1760	4-M33	1820	4-M45	1820	4-M52

注：可根据ANSI、JIS、DIN标准及非标尺寸生产，表中所列的螺栓孔径是铸铁法兰的孔径。

Note: according to ANSI, JIS, DIN standard and non-standard size of the production, listed in the table is a cast iron flange bolt hole diameter.

阀板分析 Disc Analysis

蝶阀 Butterfly valve							
与介质接触 medium	材料名称 Material	适应尺寸 Applicable dimension	PT值 value	氯含量(ppm) chlorinity content	适用温度(°C) Applicable temperature	材质优点 Material merits	应用介质 Application medium
蝶板 Butterfly plate	SAF2507 超级双项钢 Super double steel、 表面质量 Surface quality S3	DN40~1200	≥3.0	< 30.000	≤35~150°C	特耐磨、耐 腐蚀、宜高 流速冲击 wear-resisting, anti-corrosive, support high-velocity impact-resisting	石灰石浆液、石膏浆液, 洗涤浆液, Gypsum浆 液、工艺水、废水等。 limestone serosity, gypsum serosity, washing serosity, gypsum serosity, process water, waste water
	DIN1.4529 超级双项不锈钢 Super double of stainless steel	DN40~1200	≥5.0	< 50.000	≤35~150°C		
	C276耐腐蚀镍基 合金表面质量S3 C276 nickel-based corrosion resistance Hard alloy surface quality S3	DN40~1200	≥2.5	< 50.000	≤35~150°C		
	Hostalen Gur						
	CF8M超低碳不锈钢 Ultra-low carbon stainless steel	DN40~1200	≥5.0	< 5.000	≤35~150°C	耐腐蚀 Anti-corrosive	工艺水、废水等 Process water, waste water etc

阀座分析 Seat Analysis

阀座(阀衬) Seat	CSM弹性胶 CSM elastic rubber	DN40~1200	≥0	< 150.000	≤35~150°C	耐磨、耐腐蚀 Wear-resisting, anti-corrosive	石灰石浆流, 石膏浆液, 洗涤浆液, Gypsum浆 液、工艺水、废水等。 limestone serosity, gypsum serosity, washing serosity, gypsum serosity, process water, waste water
	EPDM 克三元乙丙橡胶 EPDM g epdm	DN40~1200	≥2.5	< 150.000	≤35~150°C	宜高流速冲击 support high-velocity impact-resisting	

主要零部件材质 Main parts and materials

阀体 Body		阀板 Disc		转轴 Shaft	衬套 Bush	阀座 Seat		
材料名称 Material	代号 code	材料名称 Material	代号 code	材料名称 Material	材料名称 Material	材料名称 Material	代号 code	适用于温度(°C) Applicable temperature
灰铸铁 Grey iron	Z	电镀球黑铸铁 Electroplated ductile iron	B1	不锈钢 Stainless steel	润滑青铜 Lubrication bronze	天然胶 NR	X1	-20~+85
球墨铸铁 Nodular iron	Q	铝青铜 Aluminum bronze	B2	碳钢 Carbon steel	聚四氟乙烯 PTFE	海帕伦 Hypalan	X2	-18~+135 短时short-term -18~+149
名铝青铜 Aluminum bronze	T	ZG1Cr18Ni9Ti 不锈钢Stainless steel	B3			乙丙橡胶 EPDM	X3	-45~+135 短时short-term -50~+149
ZG1Cr18Ni9Ti 不锈钢Stainless steel	P	钛钢 Titanium steel	B4			氯乙橡胶 Chloroacetyl rubber	X4	-7~+93 短时short-term -7~+107
CF8M不锈钢 CF8M stainless steel	R	CF8M不锈钢 CF8M stainless steel	B5			丁腈橡胶 NBR	X5	-12~+82 短时short-term -12~+93
碳钢 Carbon steel	C	碳钢 Carbon steel	B6			耐磨橡胶 WR	X6	-10~+50
		CF8M不锈钢 CF8M stainless steel	B7			氟橡胶 Vitom	X7	-23~+150
						耐热乙丙橡胶 Heat-resistant EPDM	X9	-20~+150
						聚四氟乙烯 PTFE	F4	+10~+150

电厂脱硫蝶阀专用阀板 Power Station Desulfurization disc

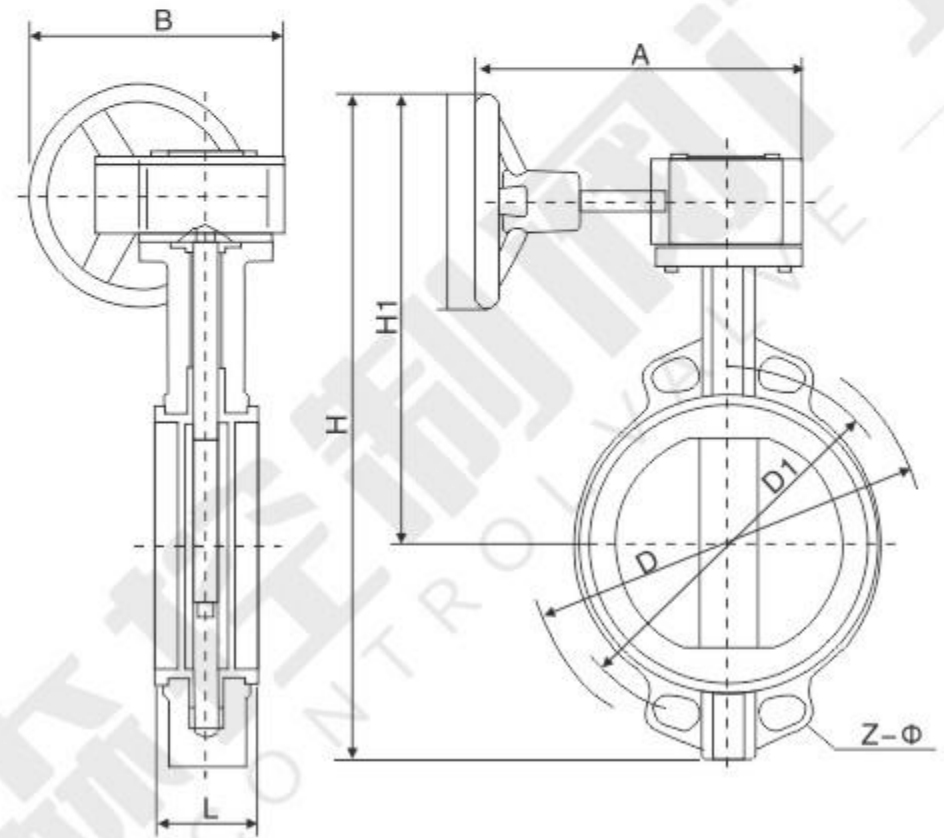
哈氏合金C276、DIN1.4529、1.4469、1.4462、1.4401、1.4410、1.4408/SAF2507、蒙乃尔、904L、255合金等。
Hastelloy C276 alloy, DIN1.4529、1.4469、1.4462、1.4401、1.4410、1.4408 / SAF2507、monel、904 L、255 alloy etc.

主要性能规范 Main Performance Specifications

适用温度 Applicable temperature	应用介质 Application medium
天然胶 ≤85℃ NR	石膏浆液、石灰石浆液、 回收水、工艺水、废水 gypsum serosity, limestone serosity, recycle-water, process water, waste water
三元乙丙胶 ≤100℃ EPDM	

主要零件材料 Main Parts and Materials

名称 Name	材料 Material
阀体 Body	灰铸铁、球墨铸铁、碳钢 Gray Iron, Ductile Iron, Carbon steel
蝶板 Butterfly plate	碳钢包覆橡胶、 碳钢包覆氟塑料、不锈钢 双相不锈钢板1.4529、C276 Rubber coated carbon steel, fluorplastic coated carbon steel, stainless seel, Duplex stainless steel 1.4529、C276
阀座 Seat	天然橡胶NR、三元乙丙胶 EPDM
阀杆 Stem	不锈钢 Stainless steel、2Cr13、304



主要外形尺寸和连接尺寸 Main External Dimensions and Connection Size(mm)

公称通径(DN)	L	D	D1	Z-φ	H	H1	A	B	Do	重量(kg)Weight
40	33	150	110	4-18	350	270	193	125	150	7
50	43	165	125	4-18	360	280	193	125	150	8
65	46	185	145	4-18	385	295	193	125	150	9
80	46	200	160	8-18	396	300	193	125	150	10
100	52	220	180	8-18	430	315	193	125	150	11
125	56	250	210	8-18	460	335	193	125	150	13
150	56	285	240	8-22	485	345	193	125	150	14
200	60	340	295	8-22	630	455	283	165	220	30
250	68	395	350	12-22	690	484	283	165	220	40
300	78	445	400	12-22	770	530	334	175	280	78
350	78	505	460	16-22	830	560	334	175	280	81
400	102	565	515	16-26	910	595	425	210	320	140
450	114	615	565	20-26	938	618	425	210	320	160
500	127	670	620	20-26	993	650	425	210	320	190
600	154	780	725	20-30	1131	718	425	210	320	315
700	165	895	840	24-30	1476	998	620	320	400	480
800	190	1015	950	24-33	1533	1008	620	320	400	516
900	203	1115	1050	28-33	1655	1070	620	320	400	780
1000	216	1230	1160	28-36	1765	1125	620	400	400	950
1100	230	1340	1270	32-36	1880	1184	620	400	400	1050
1200	254	1455	1380	32-39	1995	1240	620	400	400	1150

采用标准
Standard

设计制造Design: GB12238

结构长度Structural length: GB12221

法兰Flange: GB/T17241.6

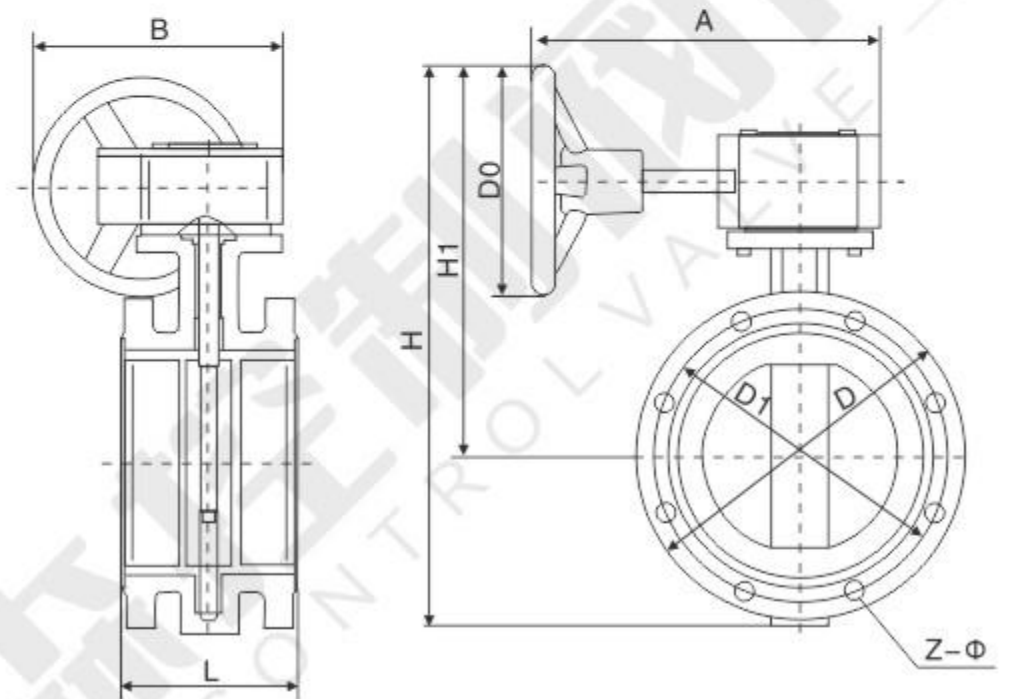
PN1.0MPa

主要性能规范 Main Performance Specifications

适用温度 Applicable temperature	应用介质 Application medium
天然胶 ≤85℃ NR	石膏浆液、石灰石浆液、 回收水、工艺水、废水 gypsum serosity, limestone serosity, recycle-water, process water, waste water
三元乙丙胶 ≤100℃ EPOM	

主要零件材料 Main Parts and Materials

名称 Name	材料 Material
阀体 Body	灰铸铁、球墨铸铁、碳钢 Gray Iron, Ductile Iron, Carbon steel
蝶板 Butterfly plate	碳钢包覆橡胶、 碳钢包覆氟塑料、不锈钢 双相不锈钢板1.4529、C276 Rubber coated carbon steel, fluorplastic coated carbon steel, stainless steel, Duplex stainless steel 1.4529、C276
阀座 Seat	天然橡胶NR、三元乙丙胶 EPOM
阀杆 Stem	不锈钢 Stainless steel、2Cr13、304



主要外形尺寸和连接尺寸 Main External Dimensions and Connection Size(mm)

公称通径 (DN)	公称压力 (PN)MPa	L	D	D1	Z-φ	H	H1	A	B	Do	重量(kg)	
50	1.0	108	165	125	4-18	310	227	193	125	150	8	
65		112	185	145	4-18	333	240	193	125	150	11.5	
80		114	200	160	8-18	423	323	193	125	150	12.5	
100		127	220	180	8-18	440	330	193	125	150	23	
125		140	250	210	8-18	455	330	193	125	150	41	
150		140	285	240	8-22	510	368	193	125	150	47	
200		152	340	295	8-22	614	444	283	165	220	61	
250		165	395	350	12-22	680	483	283	165	220	74	
300		178	445	400	12-22	776	554	334	175	280	103	
350		190	505	460	16-22	840	588	334	175	280	120	
400		216	565	515	16-26	858	596	425	210	320	217	
450		222	615	565	20-26	993	686	425	210	320	242	
500		229	670	620	20-26	1056	721	425	210	320	279	
600		267	780	725	20-30	1161	771	425	210	320	396	
700		229	860	810	24-26	1350	818	503	393	450	265	
700		292	895	840	24-30	1350	818	503	393	450	424	
800	241	975	920	24-30	1440	858	503	393	450	345		
800	318	1015	950	24-33	1440	858	503	393	450	552		
900	241	1075	1020	24-30	1616	978	630	555	500	425		
900	0.6	330	1115	1050	28-33	1616	978	630	555	500	680	
1000	1.0	300	1175	1120	28-30	1780	1058	630	555	500	565	
1000	0.6	410	1230	1160	28-36	1780	1058	630	555	500	906	
1100	1.0	350	1305	1240	28-33	1995	1200	630	555	500	740	
1100	0.6	440	1340	1270	32-36	1995	1200	630	555	500	1184	
1200	1.0	350	1405	1340	32-33	2045	1250	630	555	500	910	
1200	0.6	470	1455	1380	32-36	2045	1250	630	555	500	1456	
采用标准 Standard	1.0	设计制造Design: GB12238				结构长度Structural length: GB12221		法兰Flange: GB/T17241.6		PN1.0MPa		

用途

本蝶阀适于冶金、化工电力和市政工程及水厂等介质为水、油品和空气管道上，起切断流体和调节介质流量等作用。

Use

This valve is suitable for metallurgy, chemical engineering and electrical and municipal waterworks, and other media for water, oil and air pipes, cut off from the flow of fluid medium such as the role and regulation.

特点

- 1、本蝶阀设计结构新颖，整体尺寸小，重量轻。
- 2、蝶板采用双偏心，启动迅速，操作轻更省力。
- 3、蝶板采用双偏心，使蝶板与密封圈间无滑动摩擦，密封面耐磨损使用寿命长，密封可靠，易调整。

Features

- 1、This valve design of novel structure, the overall small size, light weight
- 2、Double eccentric butterfly plate, start quickly, the operation is more labor-saving light.
- 3、Double eccentric butterfly plate, so that seal between the butterfly plate and no sliding friction, wear resistance and long service life sealing surface sealing, reliable, easy to adjust.

工作原理

旋转蝶阀手轮，通过蜗杆蜗轮传动，带动阀杆蝶板在90度范围内自由旋转，使蝶阀处于开启或关闭状态，达到通或切断介质的目的。

Work

Rotary valve hand wheel, through the worm gear transmission, the stem disc drive within the 90-degree rotation, so that valve is opened or closed state, to achieve the purpose of communication or cut off the media.

采用标准Standard

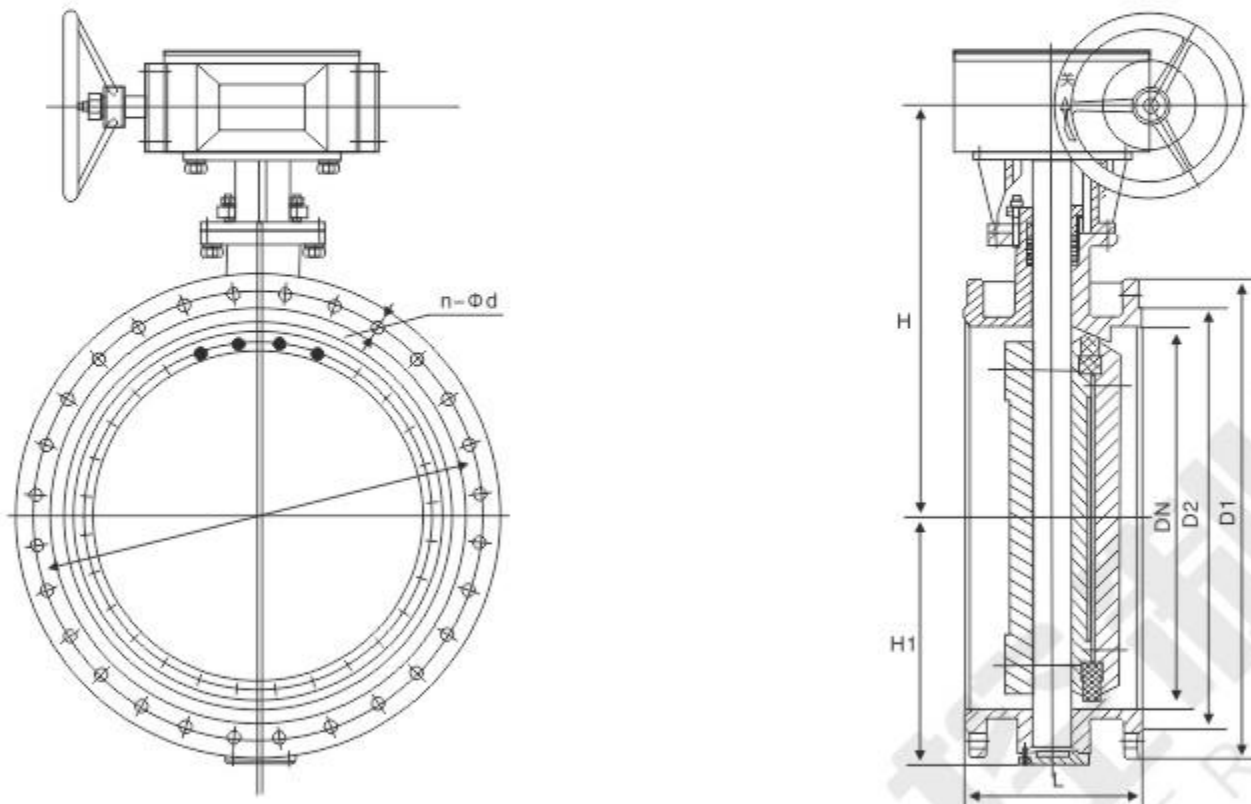
制造标准 Manufacturing standards	GB 12238-89	法兰标准Flange standard	GB/T 17241.6 GB/T 9113.1
结构长度标准 Structure of the length of the standard	GB 12221-89	检验标准Test standard	GB/T 13927-92

主要性能规范Main Performance Specifications

型号Model	公称压力 PN(MPa)	壳体试验压力 PS(MPa)	密封试验压力 PS(MPa)	工作温度 Work temperature (°C)	适用介质 Applicable medium
D ₉ ³ 641X-6	0.6	0.9	0.66	≤80°C	水、油品 Water, oil
D ₉ ³ 641X-10	1.0	1.5	1.1	≤80°C	水、油品 Water, oil

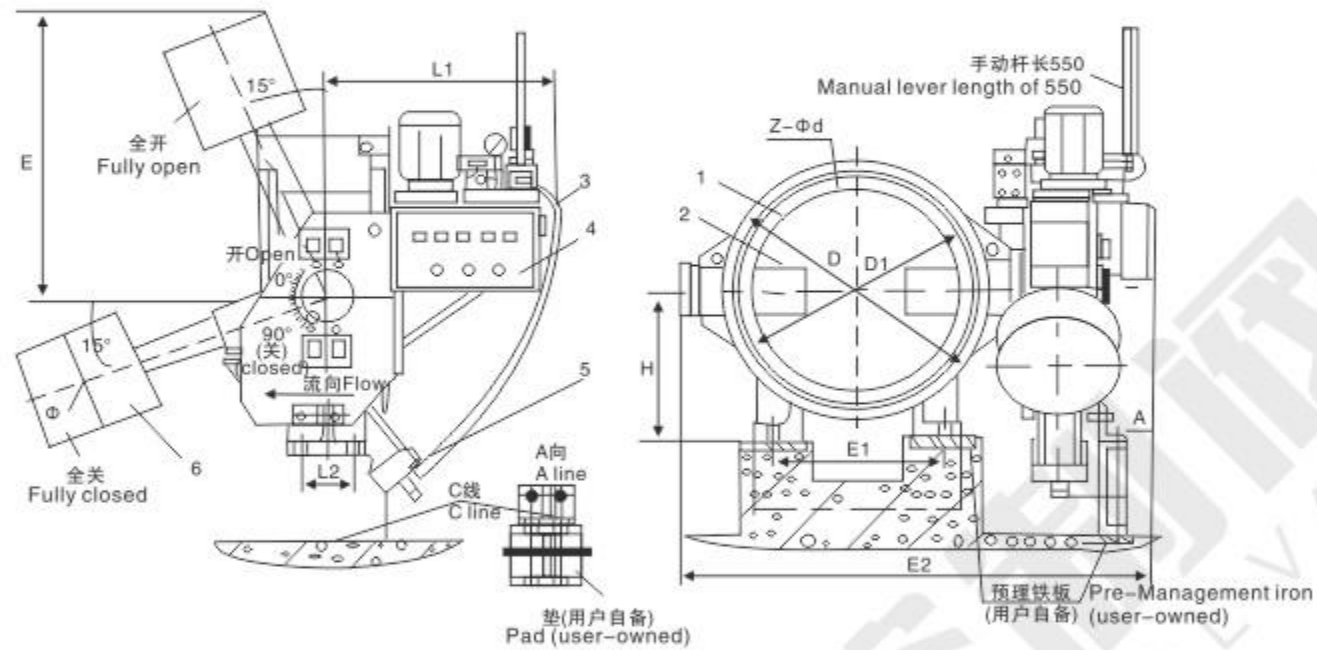
主要零件材料Main parts and materials

零件名称Part name	阀体、蝶板 Valve body, butterfly plate	阀杆Stem	阀座Seat	密封圈Ring	填料Packing
材料Material	灰铸铁 Grey cast iron 球墨铸铁 Ductile iron 铸钢 Cast steel 不锈钢 Stainless steel 镍铬铸铁 Nickel-chromium cast iron	中碳钢 Medium carbon steel 不锈钢 Stainless steel (2Cr13) 1Cr18Ni9Ti	铜合金、不锈钢 Copper alloy, stainless steel	丁晴橡胶NBR 乙丙橡胶EPDM 聚四氟乙烯PTFE 氟橡胶Viton	柔性石墨 Flexible graphite



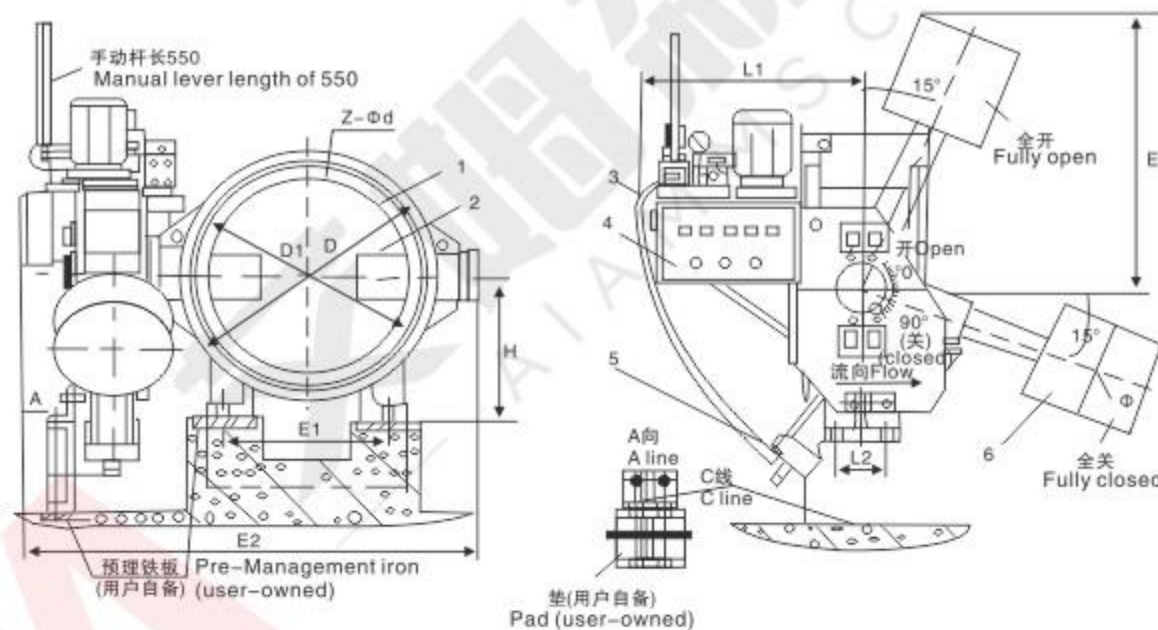
主要连接尺寸 Main connection dimensions

公称通径 DN(mm)	L		H1	H2	0.6MPa				1.0MPa			
	短系列 Short Series	长系列 Long series			D	D1	D2	n-d	D	D1	D2	n-d
100	127	127	120	240	210	170	144	4-19	220	180	144	8-19
125	140	140	130	270	240	200	174	8-19	250	210	174	8-19
150	140	140	150	300	265	225	199	8-19	285	240	199	8-23
200	152	152	180	330	320	280	254	8-19	340	295	254	8-23
250	165	250	220	400	375	335	309	12-19	395	350	309	12-23
300	178	270	220	410	440	395	363	12-23	445	400	363	12-23
350	190	290	270	460	490	445	413	12-23	505	460	413	16-23
400	216	310	290	510	540	495	463	16-23	565	515	463	16-28
450	222	330	320	560	595	550	518	16-23	615	565	518	20-28
500	229	350	360	590	645	600	568	20-23	670	620	568	20-28
600	267	390	390	660	755	705	887	20-26	780	725	667	20-31
700	292	430	460	780	860	810	772	24-26	895	840	772	24-31
800	318	470	530	850	975	920	878	23-31	1015	950	878	24-34
900	330	510	570	920	1075	1020	978	24-31	1115	1050	978	28-34
1000	410	550	630	990	1175	1120	1078	28-31	1230	1160	1078	28-37
1200	470	630	750	1115	1405	1340	1295	32-34	1455	1380	1295	32-40
1400	530	710	850	1228	1630	1560	1510	36-37	1675	1590	1510	36-43
1600	600	790	990	1340	1830	1760	1710	40-37	1915	1820	1710	40-49
1800	670	870	1100	1570	2045	1970	1918	44-40	2115	2020	1920	44-49
2000	760	950	1210	1680	2265	2180	2125	48-43	2325	2230	2130	48-49
2200	590	/	1340	1850	2475	2390	2335	52-43	2550	2440	2330	52-56
2400	650	/	1460	1970	2685	2600	2545	56-43	2760	2650	2530	56-56
2600	700	/	1560	2120	2905	2810	2750	60-49	2960	2850	2740	60-56
2800	760	/	1680	2240	3115	3020	2960	64-49	3180	3070	2940	64-56
3000	810	/	1800	2360	3315	3220	3160	68-49	3405	3290	3150	68-62
3200	880	/	1920	2500	3525	3430	3370	72-49	3630	3510	3360	72-62
3400	950	/	2040	2620	3735	3640	3580	76-49	3850	3730	3570	76-62



1、阀体 2、蝶板 3、液控系统 4、电控箱 5、摆动油缸 6、重锤
1、Body 2、disc 3、hydraulic control system 4、electric control box 5、swing cylinder 6、hammer

正装型 Dress Type



1、阀体 2、蝶板 3、液控系统 4、电控箱 5、摆动油缸 6、重锤
1、Body 2、disc 3、hydraulic control system 4、electric control box 5、swing cylinder 6、hammer

反装型 Anti-mounted type

用途及特点

本蝶阀是在引进国外产品的基础上在性能上经过改进和完善的产品。它能按预定程序实现泵阀联动；开启和关闭远距离自动控制、自动保压不掉锤，蝶板不抖动，流阻小；具有可调快、慢关两个阶段，特别是当突然停电或事故停泵时，永存的重锤势能，将自动按预先调节的快慢关两个阶段关阀，防止水锤危害，保护水泵及管网系统安全。

本阀广泛用于水厂、电厂、冶金、排灌等大中型工程管道泵站。

Uses and Features

The butterfly is the introduction of foreign products on the basis of improved performance and improved products. It can achieve the scheduled procedure valve linkage; open and close remote control, automatic packing can not afford to hammer, the disc does not jitter, small resistance; with adjustable speed, slow off the two phases, especially when a sudden power failure or accident when the pump stops, the heavy hammer of eternal potential, will automatically adjust the speed of the relevant pre-closing valve in two stages, to prevent water hammer damage, protect the water pump pipe network system security.

The valves are widely used in water plants, power plants, metallurgy, irrigation and drainage pumping stations and other large and medium projects in the pipeline.

